

Early Detection Invasive Plant Species in Virginia

Kevin Heffernan

DCR Division of Natural Heritage



Watch Out!

Giant Hogweed





Watch Out!
Heracleum
mantegazzianum

Watch Out!

Giant Hogweed



Watch Out!



Watch Out!

Giant Hogweed





5452746



5398970



5452682



5474256

[http://www.invasivespeciesva.org/
species/giant-hogweed](http://www.invasivespeciesva.org/species/giant-hogweed)

Watch Out!

Beach Vitex

Vitex

rotundifolia



UGA5286092

Watch Out!

Beach Vitex



Watch Out!

Beach Vitex



Watch Out!

Beach Vitex



UGA5286096

Watch Out!

Beach Vitex



UGA2116033

Watch Out!

Beach Vitex



Watch Out!

Beach Vitex



Watch Out!

Beach Vitex



UGA5287074

Watch Out!

Beach Vitex

www.beachvitex.org

Watch Out!

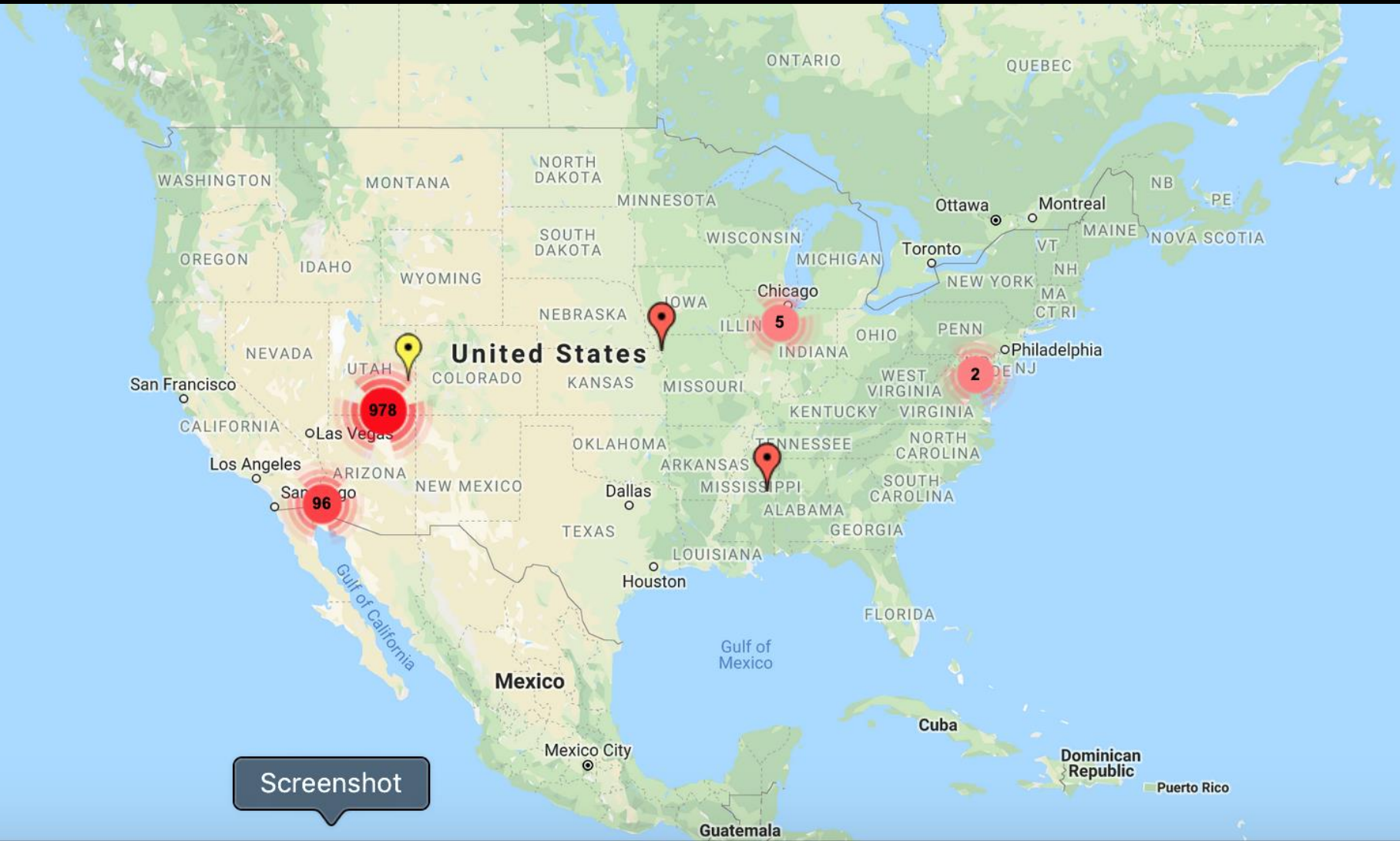
Saccharum ravennae



Watch Out!

Ravenna Grass





Screenshot

Watch Out! Wavyleaf Grass



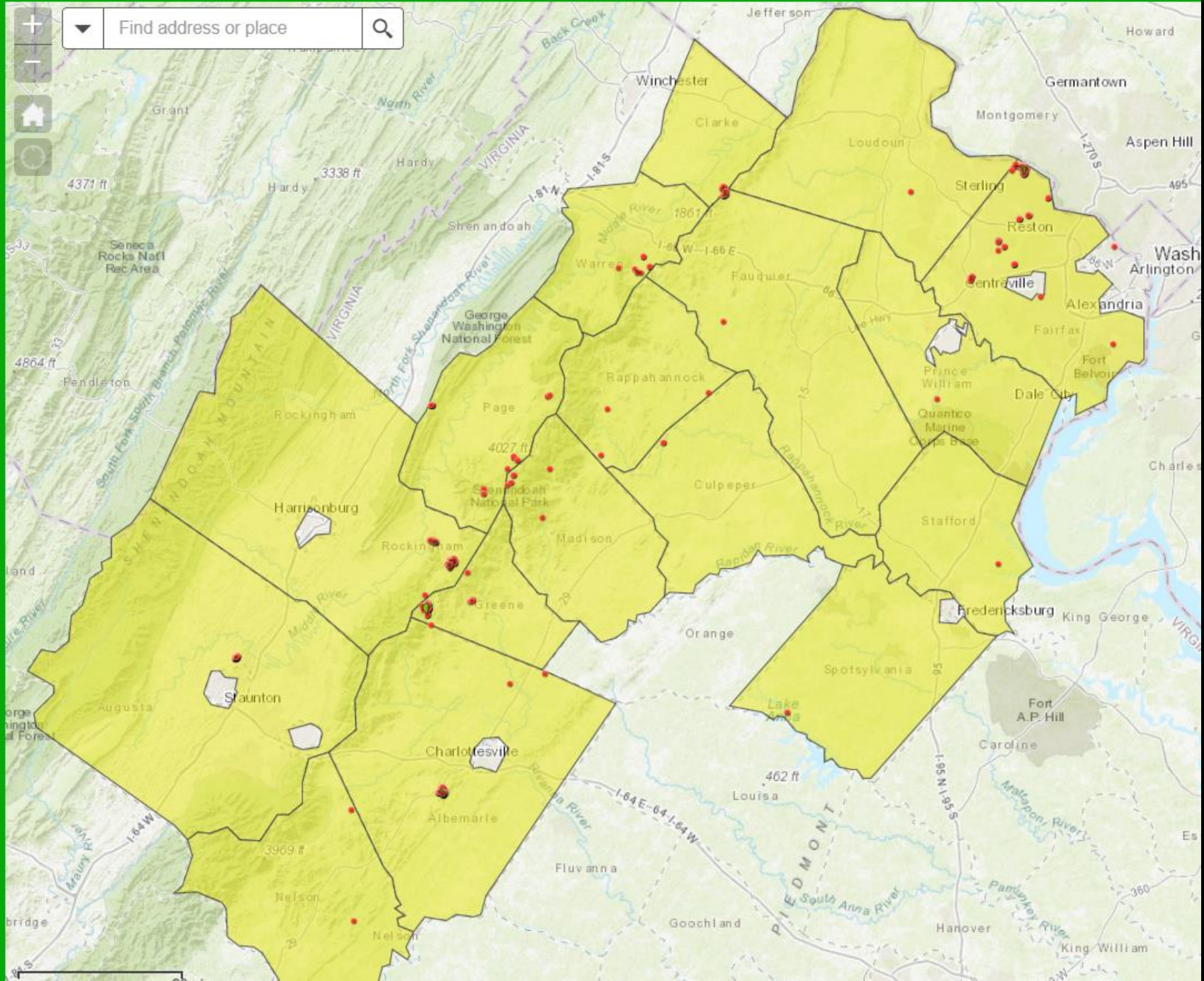
Watch Out!

Oplismenus undulatifolius





Find address or place



Watch Out! Wavyleaf Basketgrass



Watch Out! Wavyleaf Basketgrass



Watch Out! Wavyleaf Basketgrass



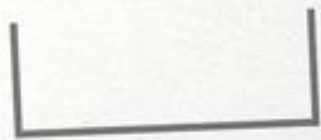






1 cm

5445022



1 cm

5445021

K.L. Kyde 2008

Oplismenus undulatifolius

Microstegium vimineum

Dichanthelium clandestinum





Distinctive silver midrib

No waviness



wavyleaf basketgrass

Japanese Stiltgrass

wavyleaf basketgrass

Deer Tongue
(much larger,
no waviness)



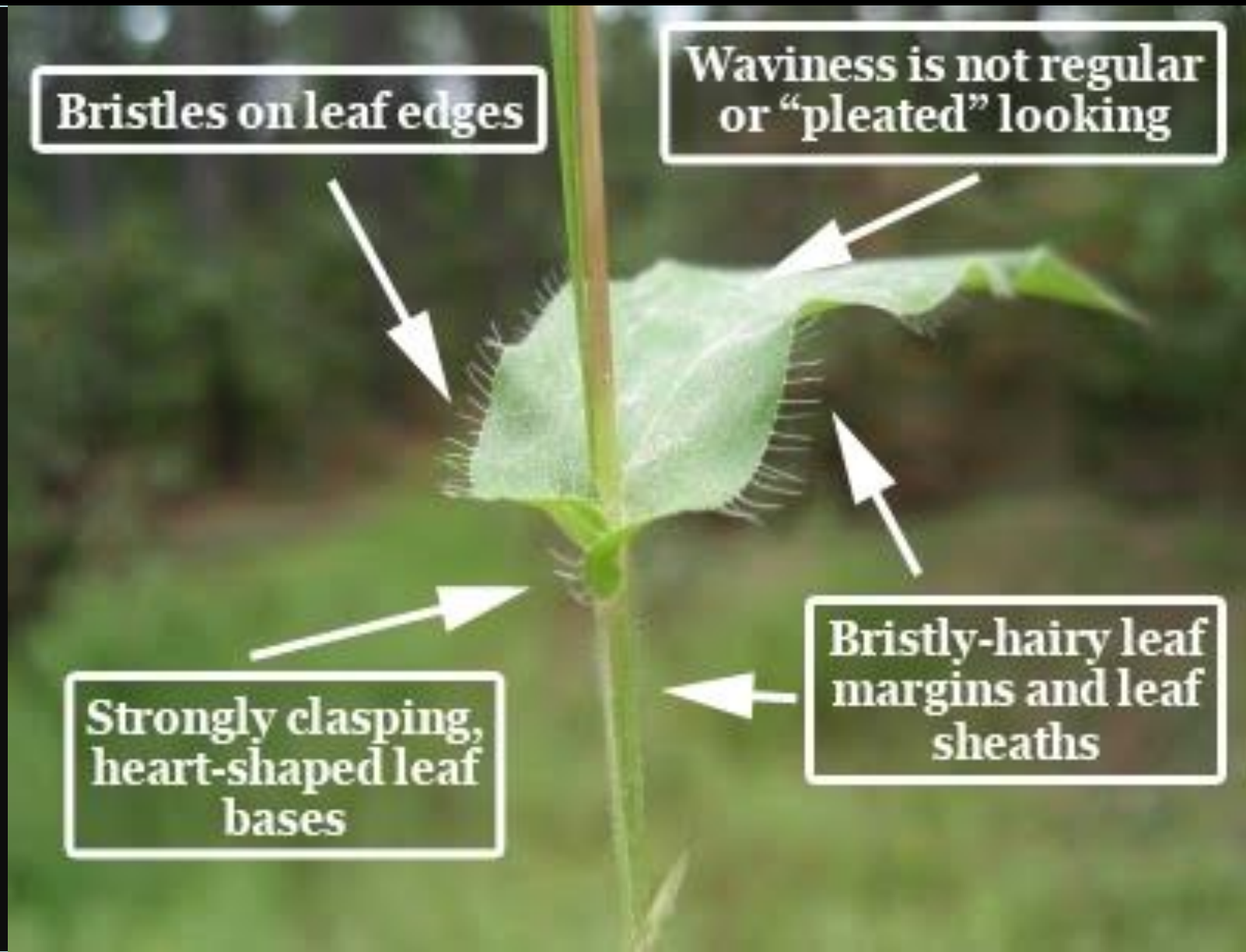
Watch Out! Japanese Stilgrass



Watch Out! Wavyleaf Grass



Watch Out! Joint-head Grass



Watch Out! Wavyleaf Basketgrass



www.eddmaps.org



Early Detection & Distribution Mapping System

Welcome: Kevin Heffernan, Virginia Department of Conservation Logout

- Report Sightings
- Distribution Maps
- Species Information
- Tools & Training
- My EDDMapS
- About

Report an Invasive Species Occurrence

Please provide as much information about the sighting as possible.

Species:

Pest:

Show all plants
To report a pest not listed, e-mail bugwood@uga.edu.

Infestation:

Observation Date: (?)

Infested Area: (?)

Gross Area: (?)

Habitat: (?)

Canopy Closure: (?)

Abundance/Density:

Patch Type:

Plant Description: In Flower In Fruit Seedlings/Rosettes Seeds Dormant/Dead Bolting Unknown

Location:

County:

Latitude:
Must be expressed in Decimal Degrees (XX.XXXX) and DATUM NAD83/WGS84.

Longitude:
Must be expressed in Decimal Degrees (XX.XXXX) and DATUM NAD83/WGS84.

Site Name:

Ownership: (?)
* If reporting infestation on private land, be sure to have landowner's permission.

Location

Location Tools:

- Preview Location
- Choose Location
- Geocode an Address
- Convert from UTM's

wavyleaf basketgrass

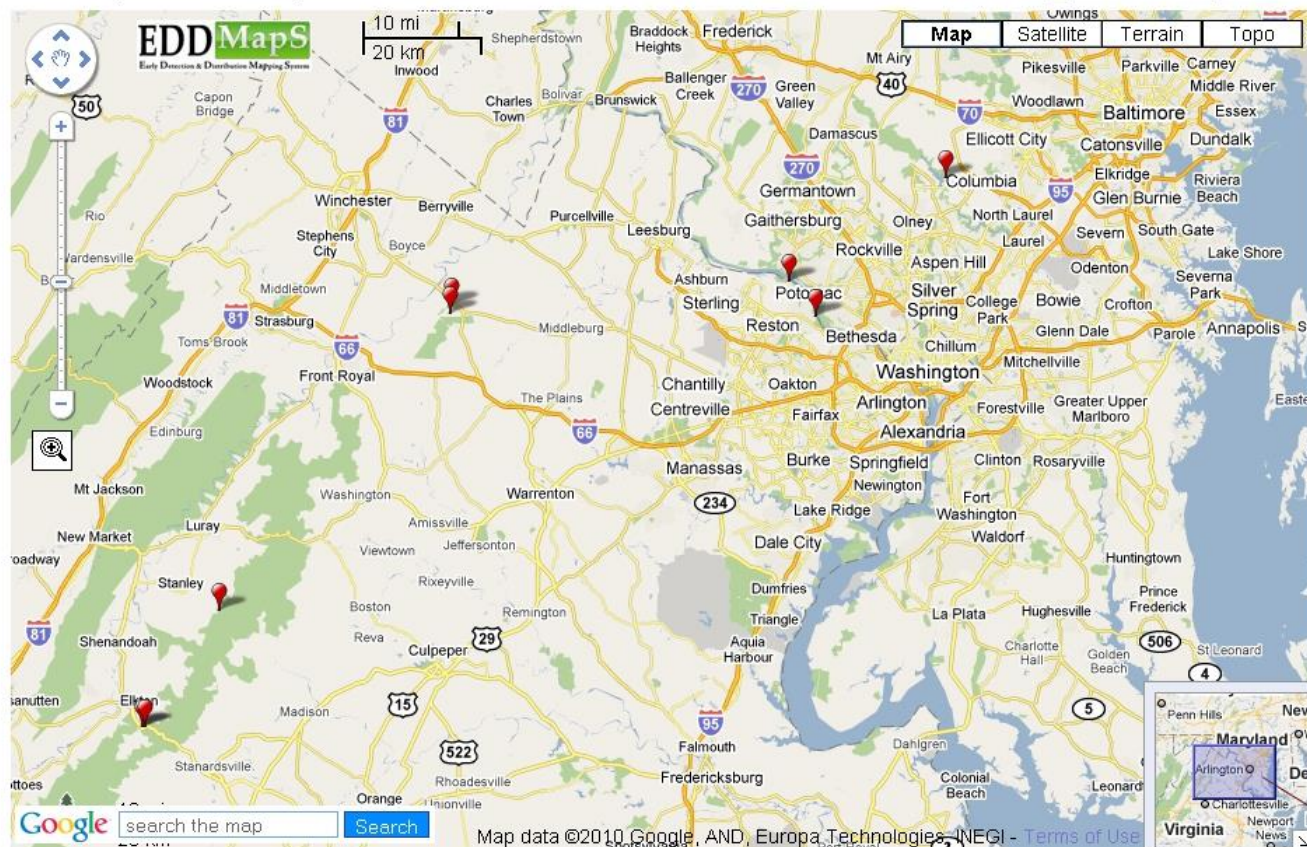
Oplismenus hirtellus ssp. undulatifolius (Ard.) U. Scholz

USDA PLANTS Symbol: OPHIU2
Invasive Plant Atlas

Distribution Maps: State / County / Southeast

Multiple Points Single Point

Print Link to this View Excel Google Earth





3G 10:21

MAEDN

Mid Atlantic Early Detection Network



UNIVERSITY OF
MARYLAND
EXTENSION

Solutions in your community



THE UNIVERSITY OF GEORGIA
CENTER FOR INVASIVE SPECIES
AND
ECOSYSTEM HEALTH

SCHOOL OF FORESTRY AND NATURAL RESOURCES COLLEGE OF AGRICULTURAL AND ENVIRONMENTAL SCIENCES





3G 10:21

MAEDN

MAEDN

Mid Atlantic Early Detection Network

Report a Plant

Report a Pest

Distribution Maps

Username: bugwood





← All Species



Acer platanoides
Norway maple



Achyranthes japonica
Japanese chaff flower



Adelges tsugae
Hemlock woolly adelgid



Aegopodium podagraria
Goutweed



Agrilus planipennis
Emerald Ash Borer



Ailanthus altissima
tree-of-heaven



Ajuga reptans
carpet bugle



Akebia quinata



Mid-Atlantic Early Detection Network



Species Categories

Report and view species by category



All Species

Full list of all species available for reporting



My Species List

Short list of your selected species



State Species List

List of species by state



Negative Survey

Fill out a negative survey report



Upload Queue

View, edit, or upload your reports



EDDMapS Login

Login or register with EDDMapS



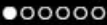
News Feed

Recent invasives species news articles



UGA2308104

Chuck Barger, University of Georgia





Lonicera japonica

Japanese honeysuckle



REPORT

INFO

IMAGES

MAP

Appearance

Lonicera japonica is a woody perennial, evergreen to semi-evergreen vine that can be found either trailing or climbing to over 80 ft. (24 m) in length. Young stems may be pubescent while older stems are glabrous.

Foliage

Leaves are opposite, pubescent, oval and 1-2.5 in. (2.5-6.4 cm) long. Margins are usually entire but young leaves may be lobed or toothed.

Flowers

Flowering occurs from April to July, when showy, fragrant, tubular, whitish-pink flowers develop in the axils of the leaves. The flowers turn cream-yellow as they age.

Fruit

The small shiny globular fruits turn from green to black as they ripen. Each fruit contains 2-3 small brown to black ovate seeds.

Ecological Threat

Lonicera japonica invades a wide variety of



← Report an Observation

Lonicera japonica
Japanese honeysuckle

2015-08-12 4:34 PM

ATTACH IMAGES

No images



LOCATION

No location data



TIME SPENT IN MINUTES

5

10

15

30

45

60

INFESTATION

Acres

Sq Feet

DENSITY

Low

Medium

High

SAVE

keheffernan

- Home
- Profile
- Observations
- Calendar
- IDs
- Lists
- Journal
- Favorites
- Projects

- All Updates
- Your Content
- Following
- Real Time Discussions

+ Add Observations

Let's Get Started by Posting Some Observations

Need inspiration? Here's some organisms being observed nearby...



Northern Cricket Frog



White-tailed Deer



Widow Skimmer



Fowler's Toad

A Long-ago Butterfly in Thailand - Observation of the Week, 4/15/19

"The opportunity to photo the upper side of the species, particularly the more flamboyant male, does not come that often."



[Read more »](#)

Everything Invasive Species Online:

www.invasivespeciesva.org

www.invasive.org

*Thanks to the many fine photographers
who contributed to the Bugwood image
library used for this presentation*